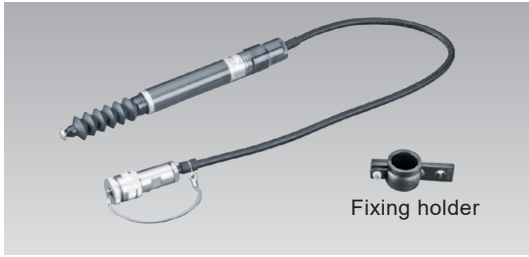


# DISPLACEMENT TRANSDUCERS

## CDP-B Displacement Transducer 5~25mm



The CDP-B displacement transducer is the CDP displacement transducer with a bellows attached to the measuring rod. It is used if measurement must be made in an adverse on-site environment.

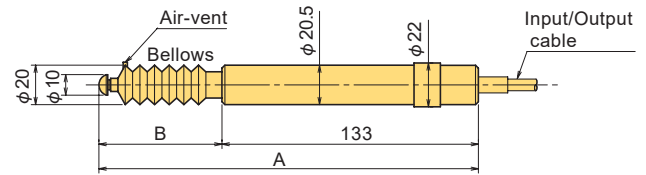
Protection ratings: IP42 equivalent

### On-site application

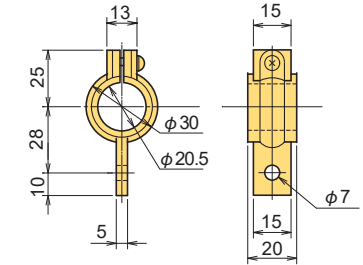
#### ■ SPECIFICATIONS

TYPE	CDP-5B	CDP-10B	CDP-25B
Capacity	5mm	10mm	25mm
Rated Output	5mV/V(10000×10 <sup>-6</sup> strain) ±0.1%		
Sensitivity(x10 <sup>-6</sup> strain)/mm	2000	1000	500
Non-linearity	0.15%RO	0.1%RO	
Spring force	6.4N	3.4N	
Frequency response	40Hz	12Hz	5Hz
Temperature effect on zero	0.01%RO/°C		
Compensated temperature range	0 ~ +40°C (no condensation)		
Allowable temperature range	-10 ~ +60°C (no condensation)		
Input/Output resistance	350Ω		
Recommended exciting voltage	2V or less		
Allowable exciting voltage	10V		
Holders supplied	CDPF-11-25 1 piece		
Weight	130g	130g	140g

Supplied cable :CT6-4N10/WJ-STB (φ6mm 0.35mm<sup>2</sup> 4- core shielded chloro-prene cable 10m)



HOLDER CDPF-11-25



#### ■ DIMENSIONS

TYPE	A	B
CDP-5B	197	64
CDP-10B	198	65
CDP-25B	208	75

## CDP-D Displacement Transducer 50/100mm

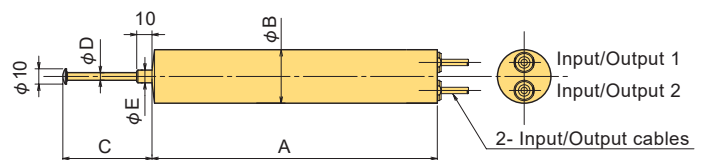


The CDP-D displacement transducer is the CDP displacement transducer with dual isolated I/O ports. For example, one set of input and output cables can be connected to an analog measuring instrument and the other set to a digital measuring instrument. With two different types of measuring equipment connected to this transducer, simultaneous measurements can be made without interference.

#### ■ SPECIFICATIONS

TYPE	CDP-50-D	CDP-100-D
Capacity	50mm	100mm
Rated Output	5mV/V(10000×10 <sup>-6</sup> strain) ±0.1%	
Sensitivity(x10 <sup>-6</sup> strain)/mm	200	100
Non-linearity	0.1%RO	
Cross sensitivity	0.2%RO	
Spring force	3.4N	4.9N
Frequency response	6Hz	3Hz
Temperature effect on zero	0.01%RO/°C	
Compensated temperature range	0 ~ +40°C (no condensation)	
Allowable temperature range	-10 ~ +60°C (no condensation)	
Input/Output resistance	350Ω	
Recommended exciting voltage	2V or less	
Allowable exciting voltage	10V	
Holders supplied	CDPF-11-50 2 pcs.	CDPF-11-100 2 pcs.
Weight	300g	600g

Supplied cable : CT6-4V10/NJ-STB (φ6mm 0.3mm<sup>2</sup> 4-core shielded vinyl cable 10m)

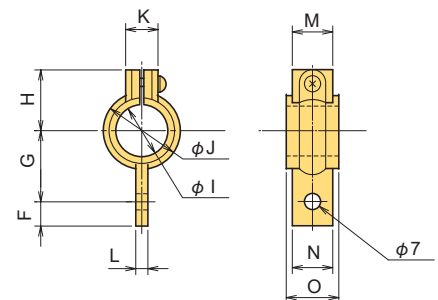


#### ■ DIMENSIONS

TYPE	A	φB	C	φD	φE
CDP-50-D	165	33.5	65	5	10
CDP-100-D	274	41	118	6	12

Protection ratings: IP40 equivalent

HOLDER CDPF-11



#### ■ DIMENSIONS HOLDER

TYPE	Applicable CDP	F	G	H	φI	φJ	K	L	M	N	O
CDPF-11-50	CDP-50-D	10	35	32	33.5	43	13	5	15	15	20
CDPF-11-100	CDP-100-D	11	36	40	41	50	17.5	8	14	16	25